

Draft genome sequence of
fastidious pathogen
Ceratobasidium theobromae,
which causes vascular-streak
dieback in Theobroma cacao

by Asman Asman

FILE	ME_SEQUENCE_OF_FASTIDIOUS_PATHOGEN_CERATOBASIDIUM_THE OBROMAE.PDF (1.38M)		
TIME SUBMITTED	19-DEC-2019 02:20PM (UTC+0700)	WORD COUNT	7496
SUBMISSION ID	1236913219	CHARACTER COUNT	39797

SHORT REPORT

Open Access

6
Draft genome sequence of fastidious pathogen *Ceratobasidium theobromae*, which causes vascular-streak dieback in *Theobroma cacao*



Shahin S. Ali^{1,2}, Asman Asman^{3,4}, Jonathan Shao⁵, Amanda P. Firmansyah⁶, Agung W. Susilo⁷, Ade Rosmana^{3,4}, Peter McMahon⁸, Muhammad Junaid^{3,4}, David Guest⁸, Tee Yei Kheng⁹, Lyndel W. Meinhardt¹ and Bryan A. Bailey^{1*}

Abstract

6
Background: *Ceratobasidium theobromae*, a member of the *Ceratobasidiaceae* family, is the causal agent of vascular-streak dieback (VSD) of cacao, a major threat to the chocolate industry in the South-East Asia. The fastidious pathogen is very hard to isolate and maintain in pure culture, which is a major bottleneck in the study of its genetic diversity and genome.

Result: This study describes for the first time, a 33.90 Mbp de novo assembled genome of a putative *C. theobromae* isolate from cacao. Ab initio gene prediction identified 9264 protein-coding genes, of which 800 are unique to *C. theobromae* when compared to *Rhizoctonia* spp., a closely related group. Transcriptome analysis using RNA isolated from 4 independent VSD symptomatic cacao stems identified 3550 transcriptionally active genes when compared to the assembled *C. theobromae* genome while transcripts for only 4 *C. theobromae* genes were detected in 2 asymptomatic stems. De novo assembly of the non-cacao associated reads from the VSD symptomatic stems uniformly produced genes with high identity to predicted genes in the *C. theobromae* genome as compared to *Rhizoctonia* spp. or genes found in Genbank. Further analysis of the predicted *C. theobromae* transcriptome was carried out identifying CAZy gene classes, KEGG-pathway associated genes, and 138 putative effector proteins.

Conclusion: These findings put forth, for the first time, a predicted genome for the fastidious basidiomycete *C. theobromae* causing VSD on cacao providing a model for testing and comparison in the future. The *C. theobromae* genome predicts a pathogenesis model involving secreted effector proteins to suppress plant defense mechanisms and plant cell wall degrading enzymes.

Keywords: *Ceratobasidiaceae*, Chocolate, *Rhizoctonia*, RNA-Seq, VSD

* Correspondence: bryan.bailey@ars.usda.gov

¹ Sustainable Perennial Crops Laboratory, USDA/ARS, Beltsville Agricultural Research Center-West, Beltsville, MD 20705, USA

Full list of author information is available at the end of the article



Background

Ceratobasidium theobromae (P.H.B. Talbot & Keane) Samuels & Keane (syn. *Oncobasidium theobromae*, *Thanatephorus theobromae*) is a basidiomycete fungus that causes Vascular-streak dieback (VSD), the second most important disease of *Theobroma cacao* (cacao) in South-east Asia after *Phytophthora* pod rot (black pod) [1]. While the global loss due to black pod is around 400,000 tons annually, VSD is responsible for approximately 30,000 tons of cacao crop loss, similar to losses due to frosty pod, another disease restricted to South and Central America [1]. Established as the causal pathogen during the 1960s [2], cacao and avocado are the only known hosts of this new encounter disease [3]. The short-lived, wind-borne spores of *C. theobromae* infect the soft young leaves at the branch tip and colonize the leaf xylem. From the leaf, the hyphae reach the stem through the petiole and spread via the xylem vessels and cause vascular necrosis and dieback of the branches, sometimes killing young trees (Fig. 1). The pathogen is endemic to most cacao growing areas of Melanesia and Southeast Asia, causes severe losses locally and contributes to declining productivity and farmers abandoning cacao cultivation. Due to the limited availability of morphological and genetic diversity information and its fastidious nature, *C. theobromae* has been very difficult to study. Currently the pathogen is identified based on PCR/sequencing of ITS regions [1]. In a recent report, Oberwinkler et al. [4] suggested that the number of nuclei in the hyphal cells was inadequate as a taxonomically defining character and hence, *C. theobromae* should be renamed *Rhizoctonia theobromae*. Within the *Ceratobasidiaceae* family, *Rhizoctonia* spp. are the most widely studied due to their wide host range and global distribution. Though there are at least 5 publicly available genomes of multinucleate *R. solani* isolates with various anastomosis groups (AG1-IA, AG1-IB, AG2-2IIB, AG3 and AG8) [5–9], there are no similar studies on binucleate *Rhizoctonia* spp. (teleomorphs: *Ceratobasidium* spp.).

The xylem-infecting pathogen grows from infected tissue onto water agar or Corticium Culture Medium (CCM) [10], but cannot be maintained in pure culture [11]. Due to its slow growth, other fungi present in the stems, petioles or leaves often overgrow *C. theobromae* during isolation attempts. When isolated in an apparent pure culture, the fungus dies out with repeated attempts at subculturing. The absence of pure culture biomass is the major constraint in obtaining good quality DNA required for molecular studies of *C. theobromae*. After multiple prolonged attempts, we obtained putative mycelia of *C. theobromae* and have carried out whole genome sequencing of the fungus for the first time. *C. theobromae* being fastidious in nature, we used the transcriptome

sequence of symptomatic and asymptomatic cacao tissue to confirm the causal agent of VSD and identify its transcriptionally active genes.

Result and discussion

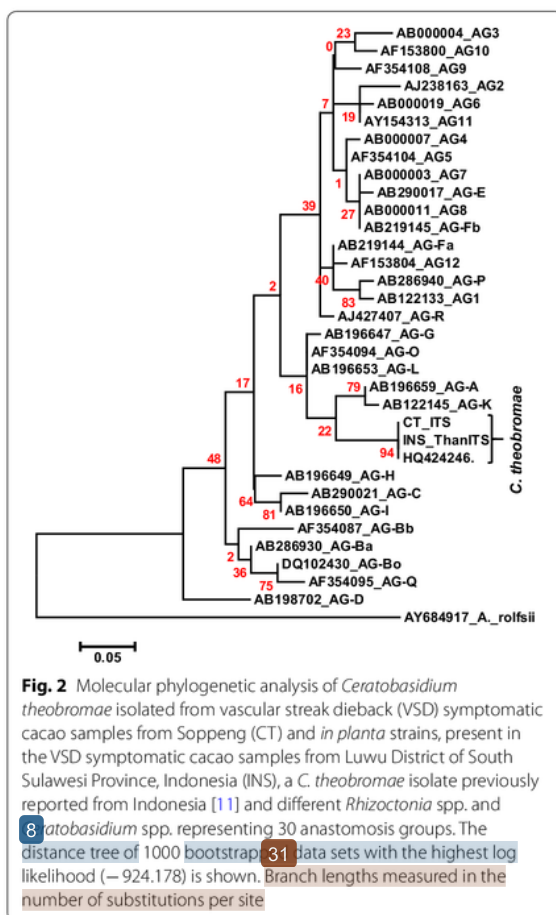
VSD, caused by the fastidious basidiomycete *C. theobromae*, is a serious threat to the cacao industry in South East Asia [1]. To isolate the VSD causing pathogen, we collected stems and petioles showing symptoms of VSD from the Soppeng District of South Sulawesi Province, Indonesia. One isolate (CT2) from these tissues was suspected to be *C. theobromae* based on its mycelial morphology [11] on water agar, and transferred to CCM media. After 3 months of growth, mycelia were harvested and DNA extracted and subjected to ITS sequencing. BLASTn searches of the ITS sequence showed 99.85% similarity to a *C. theobromae* strain South Sulawesi 2 (GenBank: HQ424246). Strains of multinucleate *R. solani* have been assigned to 13 anastomosis groups (AG-1 to AG-13). Whereas, strains of binucleate *Rhizoctonia* spp. with *Ceratobasidium* teleomorphs have been grouped into 21 anastomosis groups designated as AG-A to AG-U [12]. Publicly available ITS sequences were obtained from GenBank for different *Rhizoctonia* spp. and *Ceratobasidium* spp. representing 30 of the anastomosis groups mentioned above. A phylogenetic study involving the ITS sequence of the *C. theobromae* isolate CT2 along with isolate previously reported from Indonesia and the 30 anastomosis groups shows that *C. theobromae* forms a separate clade and the closest related anastomosis groups are AG-A and AG-K (Fig. 2). Similar results were also reported by Samuels et al. [11] who also confirmed the binucleate nuclear condition of *C. theobromae* mycelia and observed hyphal anastomoses. Using a nested PCR assay, 7 VSD symptomatic cacao stem samples from the Luwu District of South Sulawesi Province, Indonesia were confirmed to be infected by *C. theobromae*, and alignment of the ITS sequences from the 7 samples showed no variation (result not shown). There was one base pair difference between the ITS sequences of CT2 and the set of samples from Luwu (result not shown), indicating possible regional variation among the *C. theobromae* strains. Among the confirmed *C. theobromae* infected VSD symptomatic stem samples, 4 were subjected to RNA-Seq analysis along with 2 asymptomatic control samples.

The initial genome assembly obtained was 44,646,720 bp and consisted of 105,861 contigs with a N50 length of 36,882 bp. Though the average GC content of the assembly was 49.25%, many of the smaller contigs had GC content greater than 60%, indicating the presence of bacterial DNA in the assembly, though the mycelial culture in liquid CCM appeared clean.



Although the bacterial contamination may have been random, another possibility is that the bacterial contaminant may have synergistic effects on the growth of *C. theobromae* possibly being necessary for its growth in vitro and/or contributing to the pathogen's fastidious nature. A recent report on the presence of a bacterial endosymbiont in *R. solani* AG 2-2IIIB and its role in virulence [13], makes it relevant to resolve the presence of the bacterial genome along with *C. theobromae*. To

remove the bacterial contamination from the genome assembly we combined two post-assembly cleaning approaches. A metagenome binning approach was used to filter out the fungal and bacterial genome. [12]. Second approach was based on GC-content and multiple similarity searches to detect potential contaminating sequences in the initial assembly. These post-assembly cleaning procedures have some advantages over pre-assembly cleanup [14].

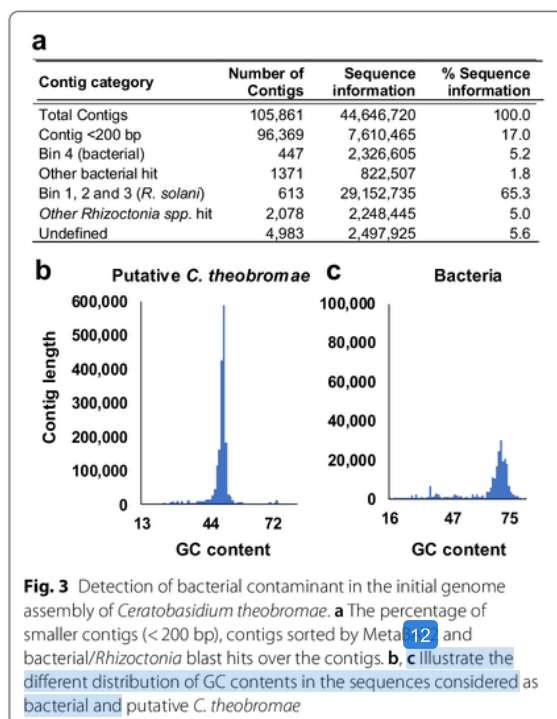


Engaging MetaBAT2, an automated metagenome binning software tool to reconstruct single genomes [15], 105,861 contigs were grouped into 4 genome bins (Table 1). Bin 1 included 28.29 Mbp, with an average GC content of 49.33% and the closest representation was *R. solani*. Bin 2 and 3 were also represented as *R. solani* and the total sequence included was small (Table 1). Altogether, 613 contigs from the three bins correspond to 29.15 Mbp of sequence information and was considered as putative *C. theobromae* genome sequence. The fourth bin included 2.33 Mbp, with an average GC content of 72.25% and the closest representation was *Actinomyces* sp. The bacterial genome showed 83.5% BUSCO [16] completeness (Table 1). Further studies are needed to see if the same bacterium is always associated with *C. theobromae* and has any role in its virulence or fastidious nature. MetaBAT2 was unable to bin 104,801 contigs, which were manually processed based on GC-content and multiple similarity searches. For that, we first eliminated 96,369 smaller contigs (<200 bp), comprising 7.6 Mbp sequence information as possible bacterial contamination or bad sequence (Fig. 3a). The remaining contigs were subjected to BLASTn searches against the NCBI nucleotide (nt) database (version December, 2018) and a closely related *R. solani* genome (GenBank: JATN000000000) with an *e*-value cutoff of $1e^{-5}$. In total, 1371 contigs corresponding to 822.5 Kbp of sequence information were identified as bacterial in origin based on BLASTn hits to bacterial genes or genomes. A BLASTn search against the *Rhizoctonia* spp. identified 2078 contigs corresponding to 2.25 Mbp of sequence information and were considered as additional putative *C. theobromae* genome sequence. Another 4983 contigs (corresponding to 2.49 Mbp) could not be attributed to either bacteria or *Rhizoctonia* spp. (Fig. 3a). As a benefit of the doubt, we considered those to be part of the *C. theobromae* genome. Comparison of GC content and contig

Table 1 Clustering of the initial 105,861 genome assembly contigs (44.64 Mbp) into genome bins using MetaBAT2

Genome bins	Bin 1	Bin 2	Bin 3	Bin 4
Closest representation ^a	<i>Rhizoctonia solani</i>	<i>R. solani</i>	<i>R. solani</i>	<i>Actinomyces</i> sp.
Total contig length (bp)	28,287,668	496,199	368,868	2,326,605
Total contig number	600	5	8	447
SCO Completeness (%)	93.4	NA	NA	83.5
Max Contig size (bp)	589,277	263,186	109,092	30,075
Min Contig size (bp)	2653	25,328	9627	1509
Mean Contig size (bp)	47,146	99,240	46,109	5205
N50 Contig length (bp)	93,535	263,186	81,760	6567
Mean GC content	49.33%	49.23%	50.41%	72.25%
Max GC content	54.13%	49.61%	51.48%	79.16%
Min GC content	44.57%	47.88%	49.44%	64.56%

^a Based on BLASTx search of the contigs against Nr-database



length of the predicted bacterial and *C. theobromae* contigs show clear difference (Fig. 3b, c). Using BMAP version 37.58 [17], 333,747,598 short reads (92.65% of the initial reads) were aligned to the 7674 contigs considered to be of *C. theobromae* genome. These reads were re-assembled using SPAdes and resulted in a 33.90 Mbp genome sequence with approximately 930× coverage.

The estimated *C. theobromae* genome is smaller than closely related Ceratobasidiales like *R. solani* strains (56.02–36.9 Mbp) [5–9] and *Botryobasidium botryosum* (45.75 Mb) [18]. The assembly consisted 35,6878 contigs with N50 length of 70,517 bp (Table 2). The overall GC content of the *C. theobromae* genome is 44.81%, which is close to different strains of *R. solani* (43.8–48.4%) [5–9], the only other sequenced species in the *Ceratobasidiaceae* family. Among the assembled contigs, Contigs 1191 and 8134 were identified to be part of the mtDNA and carry the ITS and 28S ribosomal RNA gene sequence of *C. theobromae*. The ITS sequence acquired was identical to that obtained by PCR from the DNA submitted for sequencing and the 28S ribosomal RNA sequence was identical to that [59] submitted by Samuels et al. [11] for *C. theobromae*. For quantitative assessment of genome completeness, BUSCO [16] analysis [5] was conducted that indicated *C. theobromae* contains 99.1% of examined loci (85.3% complete genes and 13.3% fragmented genes). The

49
Table 2 Genome assembly and annotation statistics of *Ceratobasidium theobromae*

	<i>C. theobromae</i>
Total Contig length (bp)	33,899,105
Contig numbers	6878
BUSCO completeness (%)	99.1%
GC content	44.81%
N50 Contig length (bp)	70,517
Max Contig size (bp)	589,277
Min Contig size (bp)	200
Mean Contig size (bp)	4930
Gene number	9264
Total gene length (bp)	20,074,964
Average gene length (bp)	2168.07
Gene density ^a	0.592
Number of expressed genes ^b	3550
Genes with GO annotation ^c	5364
Genes within KEGG pathway	3055

^a CDS bases/total genome bases

^b Only gene models with ≥ 10 raw reads, detected in any of the infected plant samples

^c Gene models with $E < 10^{-5}$ for BLASTn against Uniport Gene Ontology database

ab initio gene prediction generated 92,48 protein-coding genes in the *C. theobromae* genome with an average sequence length of 2,168 bp (Table 2). In comparison to the five strains of *R. solani*, the assembled CT2 genome has between 1225 to 4156 less genes.

Functional annotation of the 9264 predicted genes showed that 5364 (58%) could be assigned GO terms and 3055 (33%) could be mapped to the KEGG pathway database (Table 2; Additional file 1: Sheet 1). KEGG pathway analysis of the whole *C. theobromae* genome and two publicly available *R. solani* genomes (AG1-IA: AFRT00000000 and AG3: JATN00000000) showed very similar results, with nearly complete major metabolic pathways for both the species (Additional file 1: Sheet 3). This is another indication that, though the predicted *C. theobromae* genome is smaller with fewer genes compared to *R. solani*, its gene complement is almost complete. Bidirectional BLASTp analysis conducted with *Rhizoctonia* spp. has identified 800 species-specific genes for *C. theobromae* (Additional file 1: Sheet 2). Though the major part of these species-specific genes encodes hypothetical proteins, the most relevant difference was the 11 *C. theobromae* specific putative effector proteins (Additional file 1: Sheet 2).

C. theobromae being fastidious in nature, Koch's postulates are not possible; therefore, we adopted the concept of sequence-based identification of the microbial pathogen [19] and relied on the transcriptome sequence

of symptomatic and asymptomatic cacao tissue. RNA-Seq analysis of four VSD stem segments verified to carry the *C. theobromae* ITS sequence identified 3551 transcriptionally active genes (with ≥ 10 raw reads) from the *C. theobromae* transcriptome, compared to just four *C. theobromae* genes showing any read detection in the two asymptomatic samples (Additional file 1: Sheet 1). The relatively low level detection of *C. theobromae* transcripts in the VSD symptomatic tissue may be due to the low titer of the fungal RNA in the samples. This is consistent with earlier reports that the fungal load of *C. theobromae* in the symptomatic tissues is very low and the same PCR-based detection techniques used here often fail in VSD symptomatic cacao tissues [11].

Self-assembly of non-cacao RNA-Seq reads from the 4 VSD symptomatic tissue samples incorporated reads ranging from 88,978 to 746,046 (Additional file 2: Sheet 1–4), depending on the sample, representing less than 0.2% of the total reads of those samples. The number of de novo assembled transcripts from the four samples ranged from 425 to 2271 (Additional file 2: Sheet 1–4). When compared to sequences in Genbank, most of the de novo assembled transcripts showed homology to the related *R. solani* AG3. Almost every transcript showed higher homology to the *C. theobromae* genes predicted from the genome assembled in this study compared to *R. solani* AG3 genes (Additional file 2). A closer inspection of the alignments between the self-assembled transcripts and the predicted genes indicates that the self-assembled transcripts are much shorter and have gaps compared to predicted genes, but otherwise have near perfect sequence matches (result not shown). This further strengthens our assertion that we have sequenced the genome of the fungus causing VSD in cacao and that the predicted genes from the assembled genome are nearly complete.

After aligning the *C. theobromae* specific RNA-Seq reads (Table 3) from the 4 VSD symptomatic tissue samples against its genes assembled in this study, variant calling generated 4326 putative single nucleotide polymorphisms (SNPs) and small insertions and deletions (INDELs). After filtering the variants (SNPs and INDELs) as mentioned in the methods, a total of 2278 putative CDS (coding DNA sequence)-based variants were obtained in 1051 *C. theobromae* genes (Additional file 2: Sheet 5). Among the 4 libraries, the total number of putative variants ($QUAL \geq 999$, $DP \geq 30$ and $GQ \geq 40$) ranged between 307 and 1673 (Table 3). The ratios between heterozygous and homozygous variants ranged between 0.021 and 0.063 (Table 3). Though the sampling size is small and these variants are not validated yet, the presence of very low heterozygosity suggests local genetic variability among *C. theobromae* isolates from the South

Table 3 List of filtered transcriptome sequence variants in RNA-Seq libraries from VSD-infected stems

RNA-Seq library	No. of RNA reads in each library	No. of variants ($QUAL \geq 999$, $DP \geq 30$, and $GQ \geq 40$)			
		Homozygous alternate		Heterozygous	
		SNPs	INDELS	SNPs	INDELS
INS_19	108,224	258	39	10	0
INS_23	283,192	620	135	26	0
INS_31	888,258	1357	280	34	2
INS_57	109,242	279	37	16	4

Sulawesi Province of Indonesia may be limited compared to regional variability. Moreover, there was not a single homozygous and heterozygous variant combinations for the same allele in the data set (Additional file 2: Sheet 5) suggesting, at a minimum, the pathogen is homothallic. Although sexual reproduction is known to occur in *C. theobromae* [11], we failed to identify mating type genes within the *C. theobromae* genome.

Proteins secreted by plant pathogenic fungi have the potential to interact with and alter host cells and therefore, their identification and characterization is essential to understanding virulence and the mechanism of infection [20]. As predicted by SignalP version 5.1 [21], 998 proteins were considered potential components of the *C. theobromae* secretome (Additional file 1: Sheet 1), accounting for 10.7% of its proteome. Fungal effectors among the secretome were identified using the machine learning program EffectorP 2.0 [22]. The 138 effector proteins predicted (Additional file 1: Sheet 4) are considered of importance due to their potential to suppress the pathogen-associated molecular pattern triggered plant immunity and are potential candidate genes for future studies on virulence, symptom expression and host range though most of these effector proteins have homologs in the *R. solani* genes, most were identified as hypothetical proteins. The predicted secreted proteins and effectors in five *R. solani* strains range between 391–1142 and 68–126 respectively [7].

To understand the potential *C. theobromae* genes involved in the modification and degradation of cell wall and other organic matter, the predicted genes were analyzed by BLASTp against the Carbohydrate-Active enzymes database (CAZymes) using a threshold value of $E < 10^{-10}$ and $> 40\%$ sequence identity. A total of 119 CAZymes families mapping to 664 predicted *C. theobromae* proteins were identified (Table 4). The web server based automated CAZyme annotation using dbCAN2 [23] also generated similar result and identified 663 *C. theobromae* proteins as potential CAZymes. Among the potential CAZymes, 355 are predicted to encode secreted

Table 4 Number of CAZymes family genes of *Ceratobasidium theobromae*

CAZymes family ^a	Total genes	Secreted ^b	Non-secreted ^b
AA3	17	5	12
AA1	15	13	2
AA5	12	8	4
AA9	22	22	0
Other AA (5)	14	8	6
CBM1	15	7	8
CBM13	24	15	9
CBM5	11	7	4
Other CBM (8)	22	12	10
CE4	18	14	4
CE16	13	5	8
CE8	11	10	1
Other CE (6)	17	11	6
GH0	13	7	6
GH43	15	7	8
GH13	13	6	7
GH3	12	6	6
GH28	19	17	2
GH5	24	13	11
GH16	30	16	14
GH18	19	7	12
GH7	12	10	2
Other GH (44)	134	71	63
GT2	15	0	15
GT4	15	0	15
Other GTs (28)	70	5	65
PL1	26	23	3
PL3_2	19	17	2
Other PLs (5)	16	11	5

^a Number within parentheses indicates the number of CAZymes families

^b As determined by SignalP, version 5.1 and BLASTp search against Carbohydrate-Active enzymes database at the threshold value of $E < 10^{-10}$ and $> 40\%$ similarity

proteins based on the presence of a signal peptide (Table 4; Additional file 1: Sheet 1). Glycoside hydrolases (GH) formed the largest group followed by glycosyltransferases (GT) and auxiliary activities (AA) (Table 4). Among the secreted CAZymes, again the largest group is GH followed by AA and polysaccharide lyases (PL). Amongst these large families, PL1, 3, GH28, GH43 and CE8 [5] often involved in pectin degradation, a component of the plant primary cell wall and middle lamella [24]. Other enzymes (AA9, GH5, GH3, and GH16 for example) often target cellulose and hemicellulose [25]. Together, the genes encoding secreted CAZymes targeting pectin, cellulose, hemicellulose and xylan during

infection are expected to support the infection and colonization of cacao by *C. theobromae* (Additional file 1: Sheet 1). In addition to secreted effectors and plant cell degrading enzymes, fungi have a broader arsenal of secreted proteins/enzymes at their disposal when causing disease. Among the non-CAZyme and non-effector secreted protein coding genes, proteases/peptidases are the largest group with known putative functions, followed by lipases and Cytochrome P450 genes (Additional file 1: Sheet 1). However unidentified hypothetical proteins remain the largest group and require more detailed study.

Conclusions

The assembled *C. theobromae* genome and its analysis provide insight into the genetic makeup of this important cacao pathogen. *C. theobromae* has the tools within its relatively compact 33.89 Mbp genome, like other plant pathogens, to cause plant disease. The *C. theobromae* genome presented supports a typical pathogenesis model, where the fungus secretes effector proteins involved in plant defense suppression along with enzymes required for degradation of cell walls and other cell components. Why the pathogen should be fastidious is unclear and whether its association with *Actinomyces* sp. has anything to do with the virulence or fastidious nature, requires more study. Although, a preliminary variant study suggests limited regional variation, future exploitation of the assembled genome should provide the basis for a better understanding of the genetic variability of the pathogen and support the development of potential disease resistance sources. The effector proteins identified here-in offer potential targets for molecular manipulation and resistance development. Due to the high number of genes that encode hypothetical proteins in this genome and limited detection of *C. theobromae* transcripts *in planta*, more research is needed to fully understand the disease mechanism of this fungus.

Materials and methods

Isolation and DNA extraction

VSD symptomatic cacao petioles were collected from Soppeng District of South Sulawesi Province, Indonesia. Petioles were surface sterilized by submerging in 6% (v/v) sodium hypochlorite for three minutes followed by three rinses in sterile water. Segments were cut transversely exposing the xylem tissue and placed on water agar. Slow growing mycelium was transferred to liquid CCM [10] then transferred to fresh liquid CCM a second time. After a total of 3 months in liquid CCM at 25 °C, mycelia were harvested in 1.5 ml microtubes and collected by centrifugation (14,000 rpm for 15 min). The mycelial pellet was freeze dried and shipped to USDA-APHIS-PPQ

facility in Beltsville, USA and transferred to the USDA-ARS Sustainable Perennial Crops Laboratory in Beltsville after inspection. DNA was extracted from the mycelia as described by Ali et al. [26].

Isolation of RNA from symptomatic plant material

VSD symptomatic and asymptomatic cacao stems were collected from the Luwu District of South Sulawesi Province, Indonesia and cut into 10 cm segments. Samples were freeze dried and clipped as mentioned above. Freeze dried cacao stems were ground in a mortar and pestle in liquid nitrogen and RNA was extracted as described by Bailey et al. [27].

Molecular identification of *C. theobromae*

For species confirmation of the mycelial DNA samples, PCR amplification of the ITS region of the template DNA of 5 *C. theobromae* samples all originating from the same initial water agar culture, were performed using the ITS4 and ITS5 primers described by White et al. [28]. PCR amplification, product purification and sequencing was performed as previously described by Ali et al. [26]. Similarly, to confirm the presence and absence of *C. theobromae* in the symptomatic and asymptomatic cacao stems, cDNA was synthesized from the extracted RNA as described by Bailey et al. [27] and diluted cDNA (1:20) was subjected to nested PCR assays, first using fungal specific ITS 4 and 5 primers [28] followed by *C. theobromae* specific primers Than ITS1 and 2 [11]. PCR products were sequenced as mentioned above.

Molecular phylogenetic analysis of *C. theobromae* isolates and different *Rhizoctonia* spp. representing 30 anastomosis groups [29] was carried out based on DNA sequence data of ITS 1 and 2 regions. Sequences were aligned using the ClustalW2 tool [30] under default settings. A phylogenetic tree was reconstructed using the Maximum Likelihood method based on the Poisson correction model [31] in MEGA6 [32].

Genome sequencing, assembly and binning

Ceratobasidium theobromae isolate CT2 genomic DNA was sequenced using Illumina paired-end short-read technology (library preparation and sequencing done by Beijing Genome Institute, Shenzhen, China). For the initial assembly, 360,198,964 short reads (100 bp) were trimmed using BMap version 37.58 [17] and were assembled using SPAdes Genome Assembler version 3.11.0 [33] in read error correction and assembling mode. K-mers was set at K21, K33, K55. Genome bins were recovered based on tetranucleotide frequencies and read coverage using MetaBAT2 [15] with default parameters.

Ab initio gene prediction

The ab initio gene prediction was performed from the assembly results using AUGUSTUS version 2.7 [34] trained with *R. solani* AG3 gene models (GenBank: JATN000000000). The predicted proteins were compared against NCBI non-redundant (NR) protein databases by BLASTp to identify biological functions [35]. Open reading frames were also annotated using Blast2GO (<http://www.blast2go.com/b2ghome>) [36] and the KEGG-database of metabolic pathways [37].

Transcriptome sequencing

To validate the expression of the *C. theobromae* predicted genes, RNA-Seq was performed on RNA from 4 independent field collected VSD symptomatic cacao stems (validated as carrying *C. theobromae* above). Two asymptomatic samples were also included. RNA-Seq library preparation and paired-end sequencing was performed using the Illumina HiSeqX platform by Beijing Genome Institute, Shenzhen, China. RNA reads from RNA-Seq libraries ranging from 72 to 104 million reads in fastq format were trimmed up using BBDuk version 37.58 [17], using adapters.fa with parameters ktrim = r, k = 23, mink = 11, hist = 1, tpe, tbo. Trimmed reads were aligned using HISAT2 2.1.0 [38] to the CDS of the *C. theobromae* genome assembled in this study.

Mining of putative variants

RNA-Seq reads in fastq format from each VSD symptomatic library (INS_19, INS_23, INS_31 and INS_57) were aligned to the CDS of the *C. theobromae* genome assembled in this study using a memory-efficient short-read aligner Bowtie2 [37, 27] [39] and the variant calling and quality control was performed as previously described by Ali et al. [40]. In short, the files were outputted into SAM and converted to BAM format using SAMtools [41]. Variant calling was performed using SAMtools mpileup and bcftools with default parameters. The resulting VCF file was filtered manually using Excel functions. All variants (SNPs and INDELs) with QUAL < 999 and DP < 30 were removed and further filtered based on genotype quality (GQ) and retained if there was at least one library supporting it (GQ ≥ 40) (Additional file 2: Sheet 5).

De novo transcriptome assembly

To further validate the assembled genome of *C. theobromae*, the causal agent of VSD, we conducted independent de novo transcriptome assemblies of the non-cacao reads from the 4-field collected VSD symptomatic cacao stems as validated above. Trimmed reads for each sample were initially aligned using HISAT2 2.1.0 [38] to the CDS of the cacao genome [42], and the unaligned reads

16 were assembled using SPAdes Genome Assembler version 3.11.0 [33] with K-mers set at K23. The ab initio gene prediction was performed from the assemblies using AUGUSTUS version 2.7 [34] trained with *R. solani* AG3 gene models. The predicted transcriptomes were compared against *C. theobromae* genome assembled in this study and closely related *R. solani* genome (GenBank: JATN00000000) by BLASTn and against NCBI non-redundant (NR) protein databases by BLASTx analysis.

18 Supplementary information

Supplementary information accompanies this paper at <https://doi.org/10.1186/s40694-019-0077-6>.

Additional file 1. *C. theobromae* genome and predicted genes.

Additional file 2. *C. theobromae* de novo transcriptome assemblies and variants.

Abbreviations

11 AA: auxiliary activities; AG: anastomosis group; BLAST: basic local alignment search tool; bp: base pair; BUSCO: benchmarking universal single-copy orthologs; CAZyme: carbohydrate-active enzyme; CCM: corticium culture medium; CDS: coding DNA sequence; CE: carbohydrate esterase; DP: raw read depth; GC: guanine-cytosine; GH: glycoside hydrolases; GO: gene ontology; GQ: genotype quality; GT: glycosyltransferases; INDEL: small insertions and deletions; ITS: internal transcribed spacer; Kbp: kilobase pair; KEGG: kyoto encyclopedia of genes and genomes; Mbp: megabase pair; NCBI: National Center for Biotechnology Information; PCR: polymerase chain reaction; PL: polysaccharide lyases; RNA-Seq: ribonucleic acid sequencing; SNP: single nucleotide polymorphism; VSD: vascular-streak dieback.

Acknowledgements

We thank all the cacao farmers of Indonesia for providing accesses to their fields for sample collection. We also thank all the field and research staffs of Indonesian Coffee and Cocoa Research Institute and Hasanuddin University, for their help in collecting processing the samples. References to a company and/or product by the USDA are only for the purposes of information and do not imply approval or recommendation of the product to the exclusion of others that may also be suitable. USDA is an equal opportunity provider and employer.

56 Authors' contributions

Conceived and designed the research: SSA, AA, APF, PM and BAB. Sample collection: AA, APF, AWS, AR, TYK and MJ. Performed bioinformatics and data analysis: SSA and JS. Contributed reagents/materials/analysis tools: BAB, PM, DG and LWM. Wrote the paper: SSA and LWM. Provided intellectual and editorial comments: SSA, BAB, PM, LWM and DG. All authors read and approved the final manuscript.

Funding

30 This work was funded by USDA ARS. Collection of isolates was supported by funding from the Australian Centre for International Agricultural Research and an Australia Award Scholarship to MJ.

36 Availability of data and materials

The complete nucleotide sequence assembly and the Whole Genome Assembly of the *C. theobromae* isolate CT2 has been deposited at GenBank under the Accession SSOPO00000000, under BioProject PRJNA524910. The combined transcriptome assembly from multiple tissues have been uploaded as additional files.

9 Ethics approval and consent to participate

Not applicable.

Consent for publication

All the authors have read the manuscript and gave consent for publication.

Competing interests

The authors declare that they have no competing interests.

15 Author details

¹ Sustainable Perennial Crops Laboratory, USDA/ARS, Beltsville Agricultural Research Center-West, Beltsville, MD 20705, USA. ² Department of Viticulture & Enology, University of California, Davis, CA 95616, USA. ³ Department of Plant Pests and Diseases, Hasanuddin University, Jl. Perintis Kemerdekaan KM 10, Makassar 90245, Indonesia. ⁴ Cocoa Research Group, Faculty of Agriculture, Hasanuddin University, Jl. Perintis Kemerdekaan KM 10, Makassar 90245, Indonesia. ⁵ USDA/ARS, Northeast Area, Beltsville, MD 20705, USA. ⁶ Faculty of Agriculture, Muhammadiyah University of Makassar, Makassar, Sulawesi Selatan 90221, Indonesia. ⁷ Indonesian Coffee and Cocoa Research Institute, Jl. PB Sudirman 90, Jember 68118, Indonesia. ⁸ Sydney Institute of Agriculture, School of Life and Environmental Sciences, The University of Sydney, Sydney, NSW 2006, Australia. ⁹ Cocoa Upstream Technology Department, Malaysian Cocoa Board, P.O. Box 30, Sg. Dulang Road, Sg. Sumun, Perak, Malaysia.

Received: 20 May 2019 Accepted: 12 September 2019
Published online: 30 September 2019

References

- McMahon P, Purwantara A. Vascular streak dieback (*Ceratobasidium theobromae*): history and biology. In: Bailey BA, Meinhardt LW, editors. Cacao diseases: a history of old enemies and new encounters. New York: Springer International Publishing; 2016. p. 307–35.
- Keane P, Flentje N, Lamb K. Investigation of vascular-streak dieback of cacao in Papua New Guinea. *Aust J Biol Sci*. 1972;25:553–64.
- Anderson RD. Avocado, an alternate host for *Oncobasidium theobromae*. *Australas Plant Pathol*. 1989;18:96–7.
- Oberwinkler F, Riess K, Bauer R, Kirschner R, Garnica S. Taxonomic re-evaluation of the *Ceratobasidium-Rhizoctonia* complex and *Rhizoctonia butinii*, a new species attacking spruce. *Mycol Prog*. 2013;12:763–76.
- Cubeta MA, Thomas E, Dean RA, Jabaji S, Neate SM, Tavantzis S, Toda T, Vilgalys R, Bharathan N, Fedorova-Abrams N. Draft genome sequence of the plant-pathogenic soil fungus *Rhizoctonia solani* anastomosis group 3 strain Rhs1AP. *Genome Announc*. 2014;2:e01072.
- Hane JK, Anderson JP, Williams AH, Sperschneider J, Singh KB. Genome sequencing and comparative genomics of the broad host-range pathogen *Rhizoctonia solani* AG8. *PLoS Genet*. 2014;10:e1004281.
- Wibberg D, Andersson L, Tzelepis G, Rupp O, Blom J, Jelonek L, Pühler A, Fogelqvist J, Varrelmann M, Schlüter A. Genome analysis of the sugar beet pathogen *Rhizoctonia solani* AG2-2IIIIB revealed high numbers in secreted proteins and cell wall degrading enzymes. *BMC Genomics*. 2016;17:245.
- Wibberg D, Rupp O, Jelonek L, Kröber M, Verwaaijen B, Blom J, Winkler A, Goesmann A, Grosch R, Pühler A. Improved genome sequence of the phytopathogenic fungus *Rhizoctonia solani* AG1-IB 7/3/14 as established by deep mate-pair sequencing on the MiSeq (Illumina) system. *J Biotechnol*. 2015;203:19–21.
- Zheng A, Lin R, Zhang D, Qin P, Xu L, Ai P, Ding L, Wang Y, Chen Y, Liu Y. The evolution and pathogenic mechanisms of the rice sheath blight pathogen. *Nat Commun*. 2013;4:1424.
- Kotila JE. Study of the biology of a new spore-forming *Rhizoctonia*, *Corticium praticola*. *Phytopathology*. 1929;19:1059–99.
- Samuels GJ, Ismaiel A, Rosmana A, Junaid M, Guest D, McMahon P, Keane P, Purwantara A, Lambert S, Rodriguez-Carres M. Vascular streak dieback of cacao in Southeast Asia and Melanesia: in planta detection of the pathogen and a new taxonomy. *Fungal Biol*. 2012;116:11–23.
- Yang G, Li C. General description of *Rhizoctonia* species complex. In: Cumagun CJ, editor. *Plant pathology*. Croatia: Intech Europe; 2012. p. 41–52.
- Obasa K, White FF, Fellers J, Kennelly M, Liu S, Katz B, Tomich J, Moore D, Shinogle H, Kelley K. A dimorphic and virulence-enhancing endosymbiont bacterium discovered in *Rhizoctonia solani*. *Phytophormes*. 2017;1:14–23.

14. Dittami SM, Corre E. Detection of bacterial contaminants and hybrid sequences in the genome of the kelp *Saccharina japonica* using Taxo-blast. *PeerJ*. 2017;5:e4073.
15. Kang D, Li F, Kirton ES, Thomas A, Egan RS, An H, Wang Z. MetaBAT 2: an adaptive binning algorithm for robust and efficient genome reconstruction from metagenome assemblies. *Peer J Prepr*. 2019;7:e27522v1.
16. Simão FA, Waterhouse RM, Ioannidis P, Kriventseva EV, Zdobnov EM. BUSCO: assessing genome assembly and annotation completeness with single-copy orthologs. *Bioinformatics*. 2015;31:3210–2.
17. Bushnell B. *BBMap: a fast, accurate, splice-aware aligner*. Berkeley: Ernest Orlando Lawrence Berkeley National Laboratory; 2014.
18. Riley R, Salamov AA, Brown DW, Nagy LG, Floudas D, Held BW, Levasseur A, Lombard V, Morin E, Ollillar R. Extensive sampling of basidiomycete genomes demonstrates inadequacy of the white-rot/brown-rot paradigm for wood decay fungi. *Proc Natl Acad Sci USA*. 2014;111:9923–8.
19. Fredericks D, Relman DA. Sequence-based identification of microbial pathogens: a reconsideration of Koch's postulates. *Clin Microbiol Rev*. 1996;9:18–33.
20. Rep M. Small proteins of plant-pathogenic fungi secreted during host colonization. *FEMS Microbiol Lett*. 2005;253:19–27.
21. Petersen TN, Brunak S, von Heijne G, Nielsen H. SignalP 4.0: discriminating signal peptides from transmembrane regions. *Nature Methods*. 2011;8:785–6.
22. Sperschneider J, Dodds PN, Gardiner DM, Singh KB, Taylor JM. Improved prediction of fungal effector proteins from secretomes with EffectorP 2.0. *Mol Plant Pathol*. 2018;19:2094–110.
23. Zhang H, Yohe T, Huang L, Entwistle S, Wu P, Yang Z, Busk PK, Xu Y, Yin Y. dbCAN2: a meta server for automated carbohydrate-active enzyme annotation. *Nucleic Acids Res*. 2018;46:W95–101.
24. Benoit I, Coutinho PM, Schols HA, Gerlach JP, Henrissat B, de Vries RP. Degradation of different pectins by fungi: correlations and contrasts between the pectinolytic enzyme sets identified in genomes and the growth on pectins of different origin. *BMC Genomics*. 2012;13:321.
25. Morales-Cruz A, Amrine KC, Blanco-Ulate B, Lawrence DP, Travadon R, Rolshausen PE, Baumgartner K, Cantu D. Distinctive expansion of gene families associated with plant cell wall degradation, secondary metabolism, and nutrient uptake in the genomes of grapevine trunk pathogens. *BMC Genomics*. 2015;16:469.
26. Ali SS, Amoako-Attah I, Bailey RA, Strem MD, Schmidt M, Akrofi AY, Surujdeo-Maharaj S, Kolawole OO, Begoude BAD, ten Hoopen GM, et al. PCR-based identification of cacao black pod causal agents and identification of biological factors possibly contributing to *Phytophthora megakarya*'s field dominance in West Africa. *Plant Pathol*. 2016;65:1095–108.
27. Bailey BA, Crozier J, Sicher RC, Strem MD, Melnick R, Carazzolle MF, Costa GG, Pereira GA, Zhang D, Maximova S. Dynamic changes in pod and fungal physiology associated with the shift from biotrophy to necrotrophy during the infection of *Theobroma cacao* by *Monilophthora roreri*. *Physiol Mol Plant Pathol*. 2013;81:84–96.
28. White TJ, Bruns T, Lee S, Taylor J. Amplification and direct sequencing of fungal ribosomal RNA genes for phylogenetics. In: Innis MA, Gelfand DH, Sninsky JJ, White TJ, editors. *PCR protocols: a guide to methods and applications*. San Diego: Academic Press, Inc.; 1990. p. 315–22.
29. Sharon M, Sneh B, Kuninaga S, Hyakumachi M, Naito S. Classification of *Rhizoctonia* spp. using rDNA-ITS sequence analysis supports the genetic basis of the classical anastomosis grouping. *Mycoscience*. 2008;49:93–114.
30. Larkin MA, Blackshields G, Brown N, Chenna R, McGettigan PA, McWilliam H, Valentin F, Wallace JM, Wilm A, Lopez R, Clustal W and Clustal X version 2.0. *Bioinformatics*. 2007;23:2947–8.
31. Zuckerkandl E, Pauling L. Evolutionary divergence and convergence in proteins. In: Bryson V, Vogel HJ, editors. *Evolving genes and proteins*. New York: Academic Press; 1965. p. 97–166.
32. Tamura K, Stecher G, Peterson D, Filipiński A, Kumar S. MEGA6: molecular evolutionary genetics analysis version 6.0. *Mol Biol Evol*. 2013;30:2725–9.
33. Bankevich A, Nurk S, Antipov D, Gurevich AA, Dvorkin M, Kulikov AS, Lesin VM, Nikolenko SI, Pham S, Pribelski AD. SPAdes: a new genome assembly algorithm and its applications to single-cell sequencing. *J Comput Biol*. 2012;19:455–77.
34. Stanke M, Steinkamp R, Waack S, Morgenstern B. AUGUSTUS: a web server for gene finding in eukaryotes. *Nucleic Acids Res*. 2004;32:W309–12.
35. Altschul SF, Gish W, Miller W, Myers EW, Lipman DJ. Basic local alignment search tool. *J Mol Biol*. 1990;215:403–10.
36. Conesa A, Götz S, García-Gómez JM, Terol J, Talón M, Robles M. Blast2GO: a universal tool for annotation, visualization and analysis in functional genomics research. *Bioinformatics*. 2005;21:3674–6.
37. Moriya Y, Itoh M, Okuda S, Yoshizawa AC, Kanehisa M. KAAAS: an automatic genome annotation and pathway reconstruction server. *Nucleic Acids Res*. 2007;35:W182–5.
38. Pertea M, Kim D, Pertea GM, Leek JT, Salzberg SL. Transcript-level expression analysis of RNA-seq experiments with HISAT, StringTie and Ballgown. *Nat Protoc*. 2016;11:1650.
39. Langmead B, Trapnell C, Pop M, Salzberg SL. Ultrafast and memory-efficient alignment of short DNA sequences to the human genome. *Genome Biol*. 2009;10:R25.
40. Ali SS, Shao J, Strem MD, Phillips-Mora W, Zhang D, Meinhardt LW, Bailey BA. Combination of RNAseq and SNP nanofluidic array reveals the center of genetic diversity of cacao pathogen *Monilophthora roreri* in the upper Magdalena Valley of Colombia and its clonality. *Front Microbiol*. 2015;6:850.
41. Li H, Handsaker B, Wysoker A, Fennell T, Ruan J, Homer N, Marth G, Abecasis G, Durbin R. The sequence alignment/map format and SAMtools. *Bioinformatics*. 2009;25:2078–9.
42. Argout X, Fouet O, Wincker P, Gramacho K, Legavre T, Sabau X, Risterucci AM, Da Silva C, Cascardo J, Allegre M. Towards the understanding of the cocoa transcriptome: Production and analysis of an exhaustive dataset of ESTs of *Theobroma cacao* L. generated from various tissues and under various conditions. *BMC Genomics*. 2008;9:512.

Publisher's Note

Springer Nature remains neutral with regard to jurisdictional claims in published maps and institutional affiliations.

Ready to submit your research? Choose BMC and benefit from:

- fast, convenient online submission
- thorough peer review by experienced researchers in your field
- rapid publication on acceptance
- support for research data, including large and complex data types
- gold Open Access which fosters wider collaboration and increased citations
- maximum visibility for your research: over 100M website views per year

At BMC, research is always in progress.

Learn more biomedcentral.com/submissions



Draft genome sequence of fastidious pathogen *Ceratobasidium theobromae*, which causes vascular-streak dieback in *Theobroma cacao*

ORIGINALITY REPORT

%24
SIMILARITY INDEX

%17
INTERNET SOURCES

%21
PUBLICATIONS

%8
STUDENT PAPERS

PRIMARY SOURCES

1 core.ac.uk Internet Source **%4**

2 "Cacao Diseases", Springer Nature, 2016 Publication **%2**

3 eprints.soton.ac.uk Internet Source **%2**

4 Asman Asman, Ade Rosmana, Nur Amin, Bryan A. Bailey, Shahin S. Ali. "Survival capacity of cacao top grafted with scions infected by vascular streak dieback pathogen: potential source of the disease long-distance spread", Archives of Phytopathology and Plant Protection, 2019 Publication **%2**

5 dx.doi.org Internet Source **%2**

6 www.mysciencework.com Internet Source **%2**

-
- 7 Submitted to New Mexico State University % 1
Student Paper
-
- 8 Ali, Shahin S., Ishmael Amoako-Attah, Rebecca A. Bailey, Mary D. Strem, Martha Schmidt, Andrew Yaw Akrofi, Surendra Surujdeo-Maharaj, Oluwaseun O. Kolawole, B.A. Didier Begoude, G. Martijn ten Hoopen, Erica Goss, Wilberth Phillips-Mora, Lyndel W. Meinhardt, and Bryan A. Bailey. "PCR-based identification of cacao black pod causal agents and identification of biological factors possibly contributing to *Phytophthora megakarya*'s field dominance in West Africa", *Plant Pathology*, 2015.
Publication % 1
-
- 9 eprints.whiterose.ac.uk % 1
Internet Source
-
- 10 www.biomedcentral.com <% 1
Internet Source
-
- 11 academic.oup.com <% 1
Internet Source
-
- 12 peerj.com <% 1
Internet Source
-
- 13 Genhua Yang, Chengyun Li. "Chapter 6 General Description of *Rhizoctonia* Species Complex", <% 1

14

mspp.org.my

Internet Source

<% 1

15

worldcocoafoundation.org

Internet Source

<% 1

16

Submitted to Cardiff University

Student Paper

<% 1

17

apsjournals.apsnet.org

Internet Source

<% 1

18

veterinaryresearch.biomedcentral.com

Internet Source

<% 1

19

Tee Yei Kheng, Siva Kumar Balasundram, Phebe Ding, Ahmad Husni Mohd Hanif, Khairul Bariah. " Determination of optimum harvest maturity and non-destructive evaluation of pod development and maturity in cacao (L.) using a multiparametric fluorescence sensor ", Journal of the Science of Food and Agriculture, 2018

Publication

<% 1

20

Mélanie Massonnet, Abraham Morales-Cruz, Andrea Minio, Rosa Figueroa-Balderas et al. "Whole-Genome Resequencing and Pan-Transcriptome Reconstruction Highlight the Impact of Genomic Structural Variation on Secondary Metabolite Gene Clusters in the

<% 1

Grapevine Esca Pathogen *Phaeoacremonium minimum*", *Frontiers in Microbiology*, 2018

Publication

21

Kustrim Cerimi, Kerem Can Akkaya, Carsten Pohl, Bertram Schmidt, Peter Neubauer. "Fungi as source for new bio-based materials: a patent review", *Fungal Biology and Biotechnology*, 2019

Publication

22

E Rahail, Untari, I Herdjiono, Saadah, C Wahyuni, T Dariati. "Low-emission strategy through effective planning and public participation in Merauke", *IOP Conference Series: Earth and Environmental Science*, 2019

Publication

23

Gary J. Samuels, Adnan Ismaiel, Ade Rosmana, Muhammad Junaid et al. "Vascular Streak Dieback of cacao in Southeast Asia and Melanesia: in planta detection of the pathogen and a new taxonomy", *Fungal Biology*, 2012

Publication

24

A Asman, N Amin, A Rosmana, T Abdullah. "Endophytic fungi associated with cacao branch and their potential for biocontrol vascular streak dieback disease on cacao seedling", *IOP Conference Series: Earth and Environmental Science*, 2018

Publication

<% 1

<% 1

<% 1

<% 1

25

Eddy Patricia Lopez Molano, Odalys García Cabrera, Juliana Jose, Leandro Costa do Nascimento et al. "Ceratomyxa cacaofunesta genome analysis reveals a large expansion of extracellular phosphatidylinositol-specific phospholipase-C genes (PI-PLC)", BMC Genomics, 2018

Publication

<% 1

26

Wibberg, Daniel, Louise Andersson, Georgios Tzelepis, Oliver Rupp, Jochen Blom, Lukas Jelonek, Alfred Pühler, Johan Fogelqvist, Mark Varrelmann, Andreas Schlüter, and Christina Dixelius. "Genome analysis of the sugar beet pathogen Rhizoctonia solani AG2-2IIIB revealed high numbers in secreted proteins and cell wall degrading enzymes", BMC Genomics, 2016.

Publication

<% 1

27

Jorge MC Mondego. "A genome survey of Moniliophthora perniciosa gives new insights into Witches' Broom Disease of cacao", BMC Genomics, 2008

Publication

<% 1

28

Mohamed F. Haroon, Luke R. Thompson, Donovan H. Parks, Philip Hugenholtz, Ulrich Stingl. "A catalogue of 136 microbial draft genomes from Red Sea metagenomes", Scientific Data, 2016

Publication

<% 1

29

journals.plos.org

Internet Source

<% 1

30

es.scribd.com

Internet Source

<% 1

31

www.nature.com

Internet Source

<% 1

32

journals.modares.ac.ir

Internet Source

<% 1

33

wrap.warwick.ac.uk

Internet Source

<% 1

34

Chen, Yan ping, Jeffery S Pettis, Yan Zhao, Xinyue Liu, Luke J Tallon, Lisa D Sadzewicz, Renhua Li, Huoqing Zheng, Shaokang Huang, Xuan Zhang, Michele C Hamilton, Steve F Pernal, Andony P Melathopoulos, Xianghe Yan, and Jay D Evans. "Genome sequencing and comparative genomics of honey bee microsporidia, *Nosema Apis* reveal novel insights into host-parasite interactions", BMC Genomics, 2013.

Publication

<% 1

35

Submitted to University of Worcester

Student Paper

<% 1

36

Clémence Plissonneau, Fanny E. Hartmann, Daniel Croll. "Pangenome analyses of the wheat

<% 1

pathogen *Zymoseptoria tritici* reveal the structural basis of a highly plastic eukaryotic genome", BMC Biology, 2018

Publication

37

www.doria.fi

Internet Source

<% 1

38

Eric R. Moore, Briana S. Bullington, Alexandra J. Weisberg, Yuan Jiang, Jeff Chang, Kimberly H. Halsey. "Morphological and transcriptomic evidence for ammonium induction of sexual reproduction in *Thalassiosira pseudonana* and other centric diatoms", PLOS ONE, 2017

Publication

<% 1

39

Zhou, Qingyuan, Juntao Jia, Xing Huang, Xueqing Yan, Liqin Cheng, Shuangyan Chen, Xiaoxia Li, Xianjun Peng, and Gongshe Liu. "The large-scale investigation of gene expression in *Leymus chinensis* stigmas provides a valuable resource for understanding the mechanisms of poaceae self-incompatibility", BMC Genomics, 2014.

Publication

<% 1

40

Submitted to University of Sydney

Student Paper

<% 1

41

escholarship.org

Internet Source

<% 1

42	pubxx.home.cern.ch Internet Source	<% 1
43	hdl.handle.net Internet Source	<% 1
44	Priyono. "Somatic embryogenesis and vegetative cutting capacity are under distinct genetic control in Coffea canephora Pierre", <i>Plant Cell Reports</i> , 02/10/2010 Publication	<% 1
45	Submitted to Cranfield University Student Paper	<% 1
46	Meryl Vila Nova, Kévin Durimel, Kévin La, Arnaud Felten et al. "Genetic and metabolic signatures of Salmonella enterica subsp. enterica associated with animal sources at the pangenomic scale", <i>BMC Genomics</i> , 2019 Publication	<% 1
47	virologyj.biomedcentral.com Internet Source	<% 1
48	www.mdpi.com Internet Source	<% 1
49	Submitted to Australian National University Student Paper	<% 1
50	Gia Khuong Hoang Hua, Lien Bertier, Saman Soltaninejad, Monica Höfte. "Cropping Systems	<% 1

and Cultural Practices Determine the Rhizoctonia Anastomosis Groups Associated with Brassica spp. in Vietnam", PLoS ONE, 2014

Publication

51

"Biogeography of Mycorrhizal Symbiosis", Springer Science and Business Media LLC, 2017

Publication

52

Rajat S. Roy, Dana C. Price, Alexander Schliep, Guohong Cai et al. "Single cell genome analysis of an uncultured heterotrophic stramenopile", Scientific Reports, 2014

Publication

53

Ali, Shahin S., Rachel L. Melnick, Jayne Crozier, Wilberth Phillips-Mora, Mary D. Strem, Jonathan Shao, Dapeng Zhang, Richard Sicher, Lyndel Meinhardt, and Bryan A. Bailey. "Successful pod infections by Moniliophthora roreri result in differential Theobroma cacao gene expression depending on the clone's level of tolerance", Molecular Plant Pathology, 2014.

Publication

54

Ani Widiastuti, Arif Wibowo, Ady Bayu Prakoso, Hendra. "Chapter 13 Current Status of Emerging Vascular-Streak Dieback (VSD) on Cacao in Yogyakarta, Indonesia", Springer

<% 1

<% 1

<% 1

<% 1

55

Dhanya S., Ramesh N V, Abhayakumar Mishra. "Traditional methods of food habits and dietary preparations in Ayurveda—the Indian system of medicine", *Journal of Ethnic Foods*, 2019

Publication

<% 1

56

Yniv Palti, Carine Genet, Ming-Cheng Luo, Aurélie Charlet et al. "A first generation integrated map of the rainbow trout genome", *BMC Genomics*, 2011

Publication

<% 1

57

Shingo Miyauchi, Anaïs Rancon, Elodie Drula, Hayat Hage et al. "Integrative visual omics of the white-rot fungus *Polyporus brumalis* exposes the biotechnological potential of its oxidative enzymes for delignifying raw plant biomass", *Biotechnology for Biofuels*, 2018

Publication

<% 1

58

Shahin S. Ali, Jonathan Shao, David J. Lary, Mary D. Strem, Lyndel W. Meinhardt, Bryan A. Bailey. "Phytophthora megakarya and *P. palmivora*, Causal Agents of Black Pod Rot, Induce Similar Plant Defense Responses Late during Infection of Susceptible Cacao Pods", *Frontiers in Plant Science*, 2017

Publication

<% 1

59

Shahin S. Ali, Jonathan Shao, David J. Lary, Brent A. Kronmiller et al. "Phytophthora megakarya and Phytophthora palmivora, Closely Related Causal Agents of Cacao Black Pod Rot, Underwent Increases in Genome Sizes and Gene Numbers by Different Mechanisms", Genome Biology and Evolution, 2017

Publication

<% 1

60

Submitted to The University of Manchester

Student Paper

<% 1

EXCLUDE QUOTES ON

EXCLUDE BIBLIOGRAPHY ON

EXCLUDE MATCHES

< 5 WORDS